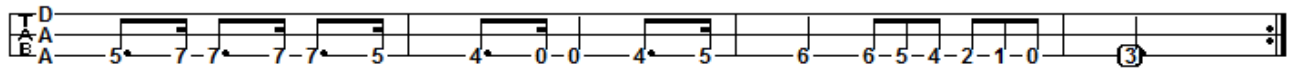
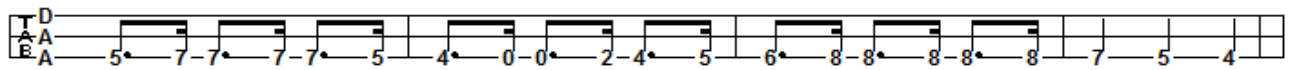
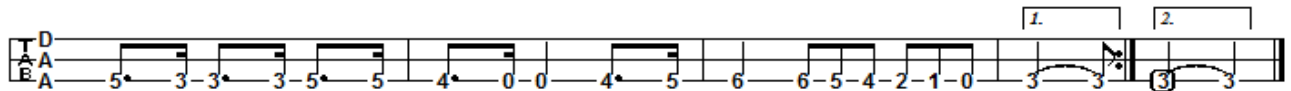
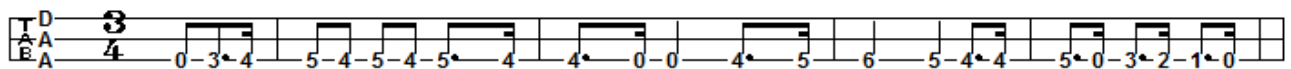


Cherokee Waltz

Traditional

Dulcimer Tab: Rob N Lackey

Here is the piece in DAA tuning. Middle & bass strings should be allowed to ring.

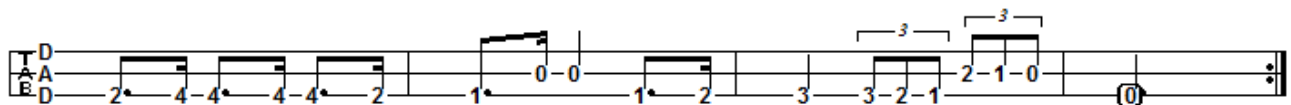
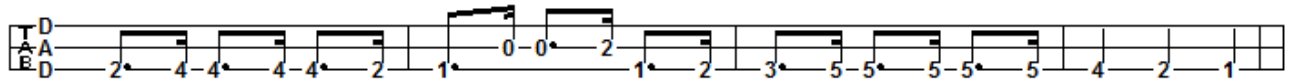
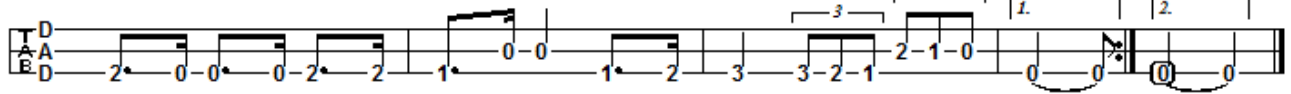
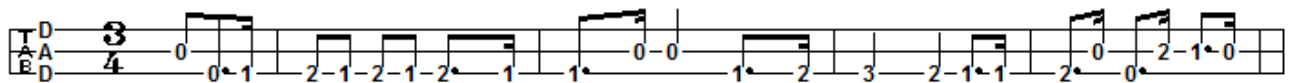


Cherokee Waltz

Traditional

Dulcimer Tab: Rob N Lackey

In this setting the melody is played in the lower octave of the melody and middle strings. In places where the middle string is fretted, you might try fretting the 1st fret of the bass string.



Cherokee Waltz

Traditional

Dulcimer Tab: Rob N Lackey

In this version the melody is played on the higher octave. Chords may be added on the middle and/or bass string as sounds good to your ear.

